



Main

Product or component type	Dv/dt filter
Range compatibility	Easy Altivar 610 Altivar Process ATV900 Altivar Process ATV600 Altivar Machine ATV340
Product specific application	Output filter
[In] rated current	95 A
Product compatibility	ATV630 variable speed drive wall mount - 15 kW, 200...240 V ATV630 variable speed drive wall mount - 18.5 kW, 200...240 V ATV630 variable speed drive wall mount - 22 kW, 200...240 V ATV630 variable speed drive wall mount - 30 kW, 380...480 V ATV630 variable speed drive wall mount - 37 kW, 380...480 V ATV630 variable speed drive wall mount - 45 kW, 380...480 V ATV650 variable speed drive wall mount - 30 kW, 380...480 V ATV650 variable speed drive wall mount - 37 kW, 380...480 V ATV650 variable speed drive wall mount - 45 kW, 380...480 V ATV610 variable speed drive - 30 kW, 380...415 V ATV610 variable speed drive - 37 kW, 380...415 V ATV610 variable speed drive - 45 kW, 380...415 V ATV930 variable speed drive wall mount - 15 kW, 200...240 V ATV930 variable speed drive wall mount - 18.5 kW, 200...240 V ATV930 variable speed drive wall mount - 22 kW, 200...240 V ATV930 variable speed drive wall mount - 30 kW, 380...480 V ATV930 variable speed drive wall mount - 37 kW, 380...480 V ATV930 variable speed drive wall mount - 45 kW, 380...480 V ATV950 variable speed drive wall mount - 30 kW, 380...480 V ATV950 variable speed drive wall mount - 37 kW, 380...480 V ATV950 variable speed drive wall mount - 45 kW, 380...480 V
Needed quantity	1
Electrical connection	Terminal block, connection capacity: 50 mm ² / AWG 1/0

Complementary

Maximum motor cable length	500 M unshielded cable at 4 kHz 300 m shielded cable at 4 kHz
DV/dt	3000 V/μs max at 200...240 V 3000 V/μs max at 380...480 V
Thermal losses	92 W at 4 kHz
Maximum drive output frequency	100 Hz
Ambient air temperature for operation	-10...50 °C (without current derating) 50...60 °C (with current derating 1.5 % per °C)

The information provided in this documentation contains general descriptions and/or technical characteristics of the performance of the products contained herein. This documentation is not intended as a substitute for and is not to be used for determining suitability or reliability of these products for specific user applications. It is the duty of any such user or integrator to perform the appropriate and complete risk analysis, evaluation and testing of the products with respect to the relevant specific application or use thereof. Neither Schneider Electric Industries SAS nor any of its affiliates or subsidiaries shall be responsible or liable for misuse of the information contained herein.

Operating altitude	0...1000 m without current derating 1000...4000 m with current derating 1 % per 100 m
Width	300 mm
Height	610 mm
Depth	245 mm
Net weight	19 kg

Environment

IP degree of protection	IP20 IP21 (with kit VW3A53905)
Ambient air temperature for storage	-40...70 °C

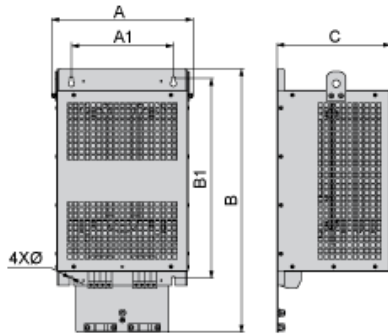
Packing Units

Unit Type of Package 1	PCE
Number of Units in Package 1	1
Package 1 Weight	31 kg
Package 1 Height	43 cm
Package 1 width	78.5 cm
Package 1 Length	44.5 cm

Offer Sustainability

REACH Regulation	REACH Declaration
REACH free of SVHC	Yes
EU RoHS Directive	Pro-active compliance (Product out of EU RoHS legal scope) EU RoHS Declaration
Toxic heavy metal free	Yes
Mercury free	Yes
RoHS exemption information	Yes
China RoHS Regulation	China RoHS Declaration

Dimensions



Dimensions in mm

A	B	C	A1	B1	Ø
300	590	245	210	411	7

Dimensions in in.

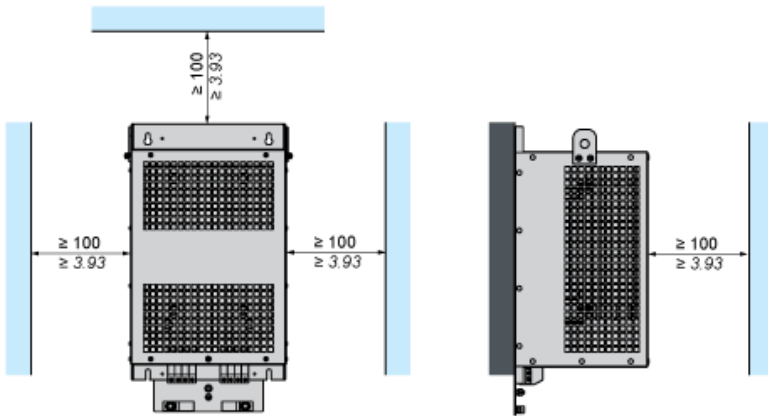
A	B	C	A1	B1	Ø
11.8	23.2	9.6	8.3	16.2	0.28

Mounting and Clearance

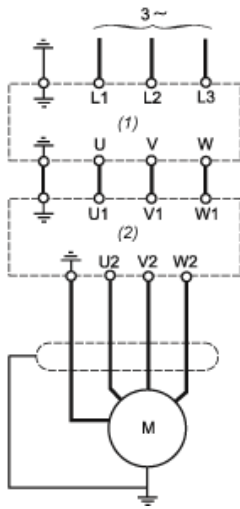


(1) Filter

$\frac{\text{mm}}{\text{in.}}$



Recommended Schema



- (1) Drive
- (2) Filter