



Main

Range of product	Altivar
Product or component type	EMC input filter
Range compatibility	Lexium 05 Altivar 312 Solar Altivar 312 Altivar Machine ATV320
Product compatibility	ATV312H018M3 ATV312H037M3 ATV312H055M3 ATV312H075M3 LXM05AD10M3X LXM05BD10M3X Variable speed drive ATV320...C motor: 0.18 kW, 200...240 V three phase Variable speed drive ATV320...C motor: 0.37 kW, 200...240 V three phase Variable speed drive ATV320...C motor: 0.55 kW, 200...240 V three phase Variable speed drive ATV320...C motor: 0.75 kW, 200...240 V three phase
Product specific application	Radio interference input filter
[In] rated current	7 A
Thermal losses	2.6 W for ATV31H018M3X
Network number of phases	Three phase

Complementary

Maximum earth leakage current	7 mA 50 Hz
Power supply voltage	200...240 V
Tolerance	10 %
Net weight	0.65 Kg 0.55 kg

Environment

IP degree of protection	IP20 IP41 (upper part)
Relative humidity	0...93 % conforming to IEC 68-2-3
Ambient air temperature for operation	-10...50 °C
Ambient air temperature for storage	-25...70 °C
Operating altitude	<= 1000 m without current derating 1000...3000 m with current derating 1 % per 100 m
Vibration resistance	1 gn (f= 13...150 Hz) conforming to IEC 60068-2-6 1.5 mm peak to peak (f= 3...13 Hz) conforming to IEC 60068-2-6
Shock resistance	15 gn for 11 ms conforming to EN/IEC 60068-2-27
Standards	EN 133200 EN/IEC 61800-3

Packing Units

Package 1 Weight	0.642 kg
Package 1 Height	0.500 dm
Package 1 width	1.860 dm
Package 1 Length	2.420 dm

Offer Sustainability

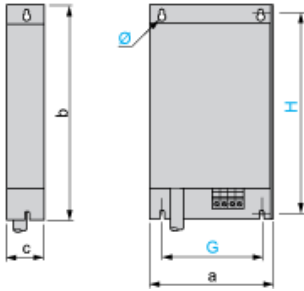
REACH Regulation	REACH Declaration
REACH free of SVHC	Yes
EU RoHS Directive	Pro-active compliance (Product out of EU RoHS legal scope) EU RoHS Declaration
Toxic heavy metal free	Yes
Mercury free	Yes
RoHS exemption information	Yes
China RoHS Regulation	China RoHS Declaration

Contractual warranty

Warranty	18 months
----------	-----------

Additional EMC Input Filters

Dimensions



Dimensions in mm

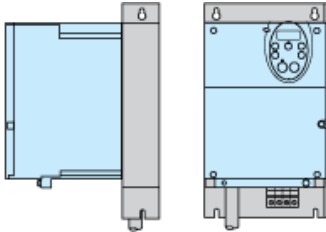
a	b	c	G	H	Ø
72	195	37	52	180	4.5

Dimensions in in.

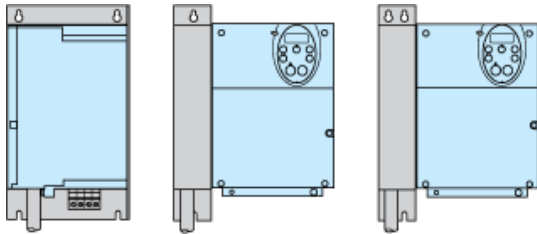
a	b	c	G	H	Ø
2.83	7.68	1.46	2.05	7.09	0.18

Additional EMC Input Filter

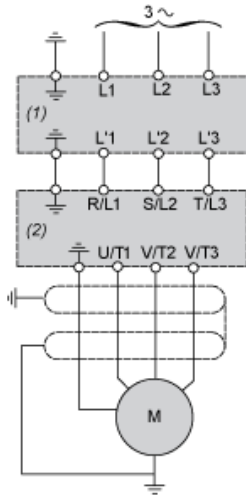
Mounting the Filter under the Drive



Mounting the Filter next to the Drive



Recommended Schema



- (1) Filter
- (2) Drive