

BMP1001F3NA2A

synchronous motor - BMP - 480 VAC - 0.95 kW
- IP65 - IEC



Main

Product or component type	Synchronous motor
Device short name	BMP
Maximum mechanical speed	3600 rpm
Nominal output power	750 W with drive ATV32 at 0.75 kW 400 V three phase[RETURN]750 W with drive ATV32 at 1.1 kW 400 V three phase[RETURN]750 W with drive ATV320 at 0.75 kW 400 V three phase[RETURN]750 W with drive ATV320 at 1.1 kW 400 V three phase
Nominal torque	2.39 N.M with drive ATV32 at 0.75 kW 400 V three phase 2.39 N.M with drive ATV32 at 1.1 kW 400 V three phase 2.39 N.M with drive ATV320 at 0.75 kW 400 V three phase 2.39 N.m with drive ATV320 at 1.1 kW 400 V three phase
Nominal speed	3000 rpm with drive ATV32 at 0.75 kW 400 V three phase 3000 rpm with drive ATV32 at 1.1 kW 400 V three phase 3000 rpm with drive ATV320 at 0.75 kW 400 V three phase 3000 rpm with drive ATV320 at 1.1 kW 400 V three phase
Product compatibility	Variable speed drive ATV32 at 0.75 kW 400 V three phase[RETURN]Variable speed drive ATV32 at 1.1 kW 400 V three phase[RETURN]Variable speed drive ATV320 at 0.75 kW 380...500 V three phase[RETURN]Variable speed drive ATV320 at 1.1 kW 380...500 V three phase
Shaft end	Keyed
IP degree of protection	IP65 standard IP67 with IP67 kit
Holding brake	Without
Mounting support	International standard flange
Electrical connection	Rotatable right-angled connector

Complementary

Range compatibility	Altivar 32 Altivar Machine ATV320
[Us] rated supply voltage	480 V
Network number of phases	Three phase
Maximum current Irms	3.5 A with drive ATV32 at 0.75 kW 400 V three phase 4.5 A with drive ATV32 at 1.1 kW 400 V three phase 3.5 A with drive ATV320 at 0.75 kW 400 V three phase 4.5 A with drive ATV320 at 1.1 kW 400 V three phase
Nominal operating frequency	250 Hz with drive ATV32 at 0.75 kW 400 V three phase 250 Hz with drive ATV32 at 1.1 kW 400 V three phase 250 Hz with drive ATV320 at 0.75 kW 400 V three phase 250 Hz with drive ATV320 at 1.1 kW 400 V three phase
Minimum operating frequency	25 Hz with drive ATV32 at 0.75 kW 400 V three phase 25 Hz with drive ATV32 at 1.1 kW 400 V three phase 25 Hz with drive ATV320 at 0.75 kW 400 V three phase 25 Hz with drive ATV320 at 1.1 kW 400 V three phase

Maximum operating frequency	300 Hz with drive ATV32 at 0.75 kW 400 V three phase 300 Hz with drive ATV32 at 1.1 kW 400 V three phase 300 Hz with drive ATV320 at 0.75 kW 400 V three phase 300 Hz with drive ATV320 at 1.1 kW 400 V three phase
Shaft diameter	19 mm
Shaft length	40 mm
Key width	6 mm
Motor flange size	100 mm
Torque constant	1.71 N.m/A at 40 °C
Number of motor poles	5
Number of motor stacks	1
Rotor inertia	3.19 kg.cm ²
Stator resistance	4.54 Ohm at 40 °C
Stator inductance	15.3 mH for q-axis winding at 40 °C 13.28 mH for d-axis winding at 40 °C
Maximum radial force Fr	900 N at 1000 rpm 720 N at 2000 rpm 630 N at 3000 rpm 570 N at 4000 rpm
Maximum axial force Fa	0.2 x Fr
Type of cooling	Natural convection
Length	128.6 mm
Centring collar diameter	95 mm
Centring collar depth	3.5 mm
Number of mounting holes	4
Mounting holes diameter	9 mm
Circle diameter of the mounting holes	115 mm
Net weight	3.34 kg

Packing Units

Unit Type of Package 1	PCE
Number of Units in Package 1	1
Package 1 Height	22.0 cm
Package 1 Width	20.0 cm
Package 1 Length	44.0 cm
Package 1 Weight	4.492 kg
Unit Type of Package 2	P06
Number of Units in Package 2	6
Package 2 Height	77.0 cm
Package 2 Width	80.0 cm
Package 2 Length	60.0 cm
Package 2 Weight	35.452 kg

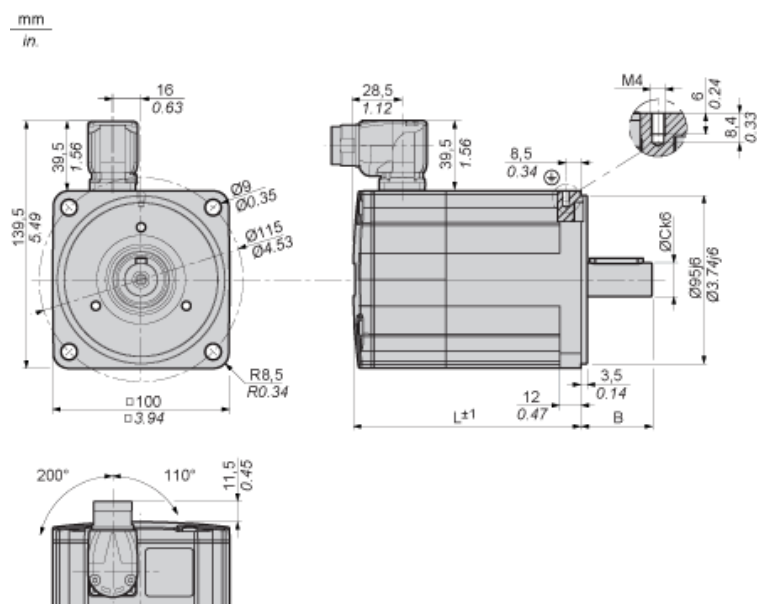
Offer Sustainability

REACH Regulation	 REACH Declaration
EU RoHS Directive	Pro-active compliance (Product out of EU RoHS legal scope)
Mercury free	Yes
China RoHS Regulation	 China RoHS Declaration
RoHS exemption information	 Yes
WEEE	The product must be disposed on European Union markets following specific waste collection and never end up in rubbish bins
PVC free	Yes

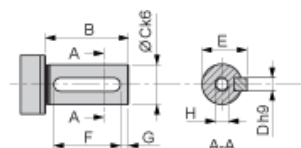
Contractual warranty

Warranty	18 months
----------	-----------

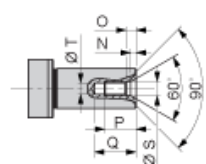
Dimensions



Parallel Key According to DIN 6885 A



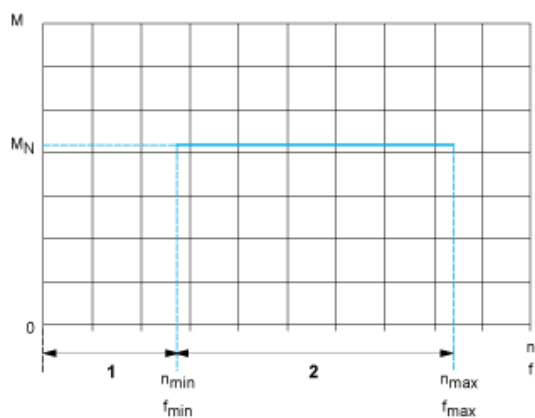
Female Thread of Shaft According to DIN 332-D



L	mm	128.6
in.	5.06	
B	mm	40
in.	1.57	
C	mm	19
in.	0.75	
D	mm	6
in.	0.24	
E	mm	21.5
in.	0.85	
F	mm	30
in.	1.18	
G	mm	5
in.	0.20	

H		M6
N	mm	2.8
in.	0.11	
O	mm	5
in.	0.20	
P	mm	16
in.	0.63	
Q	mm	21
in.	0.83	
S	mm	6.4
in.	0.25	
T	mm	5
in.	0.20	

Performance curves



M : Torque in Nm

n : Speed in rpm

f : frequency in Hz

1 : Only permissible during acceleration and deceleration phases.

2 : Continuous operation with the default values from the configuration file.