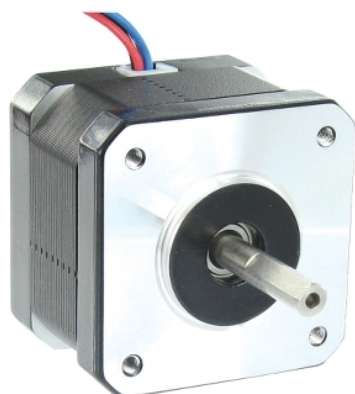


# BRS2423A150

2-phase stepper motor - 0.53 N.m - shaft Ø5 mm - L=48mm - without brake - 1.5A



## Main

Range compatibility	Lexium SD2
Product or component type	Motion control motor
Device short name	BRS2
Motor type	2-phase stepper motor

## Complementary

Maximum mechanical speed	1800 rpm
Supply voltage limits	12...48 V DC
Mounting support	Flange
Motor flange size	42.3 mm
Length	48 mm
Number of motor stacks	3
Centring collar diameter	22 mm
Centring collar depth	2.03 mm
Number of mounting holes	4
Mounting holes diameter	3 mm
Circle diameter of the mounting holes	43.84 mm
Electrical connection	Flying lead
Holding brake	Without
Shaft end	Smooth shaft
Second shaft	Without second shaft end
Shaft diameter	5 mm
Shaft length	21.85 mm
Holding torque	0.53 N.m
Rotor inertia	0.082 kg.cm <sup>2</sup>
Resolution	200 steps number of full steps per revolution 1.8 ° step angle
[In] rated current	1.5 A
Resistance	2 Ohm (winding)

## Environment

Ambient air temperature for operation	-25...40 °C
Ambient air temperature for storage	-25...70 °C
Operating altitude	<= 1000 m without power derating
Relative humidity	15...85 % without condensation
IP degree of protection	IP20 conforming to IEC/EN 60034-1
Temperature class	B winding conforming to IEC/EN 60034-1

## Packing Units

Unit Type of Package 1	PCE
Number of Units in Package 1	1
Package 1 Height	20 cm
Package 1 Width	25.5 cm
Package 1 Length	32.5 cm
Package 1 Weight	402 g
Unit Type of Package 2	BB1
Number of Units in Package 2	20
Package 2 Height	20 cm
Package 2 Width	25.5 cm
Package 2 Length	32.5 cm
Package 2 Weight	8.04 kg
Unit Type of Package 3	S06
Number of Units in Package 3	160
Package 3 Height	73.5 cm
Package 3 Width	60 cm
Package 3 Length	80 cm
Package 3 Weight	77.32 kg

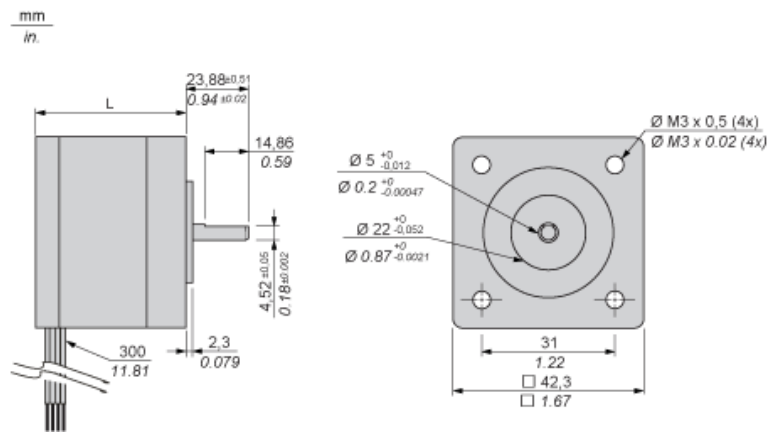
## Offer Sustainability

REACH Regulation	<a href="#">REACH Declaration</a>
REACH free of SVHC	Yes
EU RoHS Directive	Pro-active compliance (Product out of EU RoHS legal scope)
Mercury free	Yes
China RoHS Regulation	<a href="#">China RoHS Declaration</a>
RoHS exemption information	<a href="#">Yes</a>
WEEE	The product must be disposed on European Union markets following specific waste collection and never end up in rubbish bins
PVC free	Yes

## Contractual warranty

Warranty	18 months
----------	-----------

Dimensions



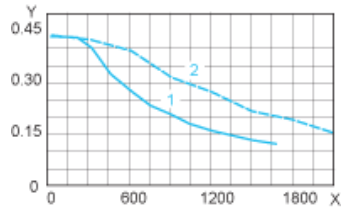
Dimensions in mm

L
48

Dimensions in in.

L
1.89

Torque Characteristics



X: Speed of rotation in rpm  
Y: torque in Nm  
1: 24 VDC  
2: 48 VDC