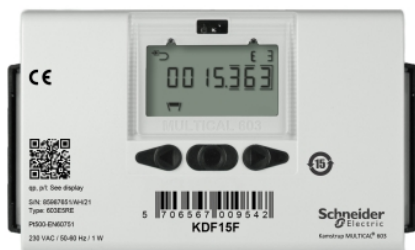


KDF15F

KD Series Flow Meter, R1 Threaded Brass, 6 m³/h Nominal, Flow Meter



Main

Range of product	KD Series
Product or component type	Flow meter
Type of measurement	Flow
Device application	Energy metering Sub-metering
Location	Plant room
Device composition	Keypad
Calibration certificate	Yes
Colour	Off white
Depth	41 mm
Height	73 mm
Net weight	2.1 kg
Width	260 mm
Display type	LCD
Enclosure material	Thermoplastic, PC 10 % GF with TPE
Energy units	L M3
Field programmable	Yes
Fitting material	Brass
Fitting size	G5/4B (R1)
Fitting type	Threaded
Flow measurement accuracy	+/- 1 %
Flow measurement range	0.06...12 m3/h
Sensor type	Ultrasonic sensor flow Thermistor temperature
[Ui] rated insulation voltage	3.75 kV
IP degree of protection	IP65
Controlled fluid	Water
Meter location	Flow line
Operating fluid temperature	2...130 °C
Relative humidity	0...100 % RH, non-condensing
Ambient air temperature for operation	5...55 °C
Output type	Analog
Pipe material	Metallic Polymer
Network frequency	50 Hz 60 Hz
Pressure rating	PN16
Standards	EN 1434 class A (MID Class E1) EN 1434 class C (MID Class E2)
Storage Relative Humidity	0...100 % RH, non-condensing
Ambient air temperature for storage	-25...60 °C

The information provided in this documentation contains general descriptions and/or technical characteristics of the performance of the products contained herein. This documentation is not intended as a substitute for and is not to be used for determining suitability or reliability of these products for specific user applications. It is the duty of any such user or integrator to perform the appropriate and complete risk analysis, evaluation and testing of the products with respect to the relevant specific application or use thereof. Neither Schneider Electric Industries SAS nor any of its affiliates or subsidiaries shall be responsible or liable for misuse of the information contained herein.

[Us] rated supply voltage	230 V AC 24 V AC 161...264 V AC 12...36 V AC
Temperature measurement accuracy	+/- 4 %
Measurement temperature	2...130 °C

Complementary

Totalizer quantities	1
Function available	Logging Totalizer resetable
Maximum power consumption in W	1 W
Pressure drop	0.14 bar
Maximum sensing distance	260 mm
Display resolution	7 digits
Clamping connection capacity	<= 1 mm ²

Packing Units

Unit Type of Package 1	PCE
Number of Units in Package 1	1
Package 1 Height	21.0 cm
Package 1 Width	33.0 cm
Package 1 Length	23.2 cm
Package 1 Weight	2.34 kg