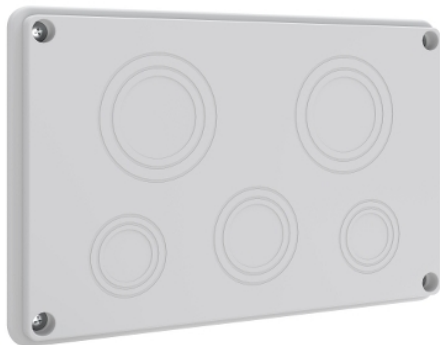


Product data sheet

Characteristics

SZNLP23

Cable gland plate, Prisma XS, 5 metric thread entries, 2xM40/63 + 1xM32/50 + 2xM25/40, for 280 mm depth enclosure



Main

Range	Prisma
Product or component type	Cable gland plate
Range compatibility	Prisma Prisma XS
Accessory / separate part category	Enclosure accessory

Complementary

Enclosure/cubicle description	Wall-mounted enclosure depth 280 mm Floor-standing enclosure depth 280 mm
Type of gland plate	Cable entry plates
Mounting location	Top Bottom
Material	Plastic
Cable entry number	2 x M40/63 1 x M32/50 2 x M25/40
Height	160 mm
Width	248 mm
Depth	30 mm
Net weight	0.240 kg
Surface finish	Untreated

Packing Units

Unit Type of Package 1	PCE
Number of Units in Package 1	1
Package 1 Height	20.0 cm
Package 1 Width	30.0 cm
Package 1 Length	3.5 cm
Package 1 Weight	270.0 g
Unit Type of Package 2	S02
Number of Units in Package 2	8
Package 2 Height	15.0 cm
Package 2 Width	30.0 cm
Package 2 Length	40.0 cm
Package 2 Weight	2.475 kg

The information provided in this documentation contains general descriptions and/or technical characteristics of the performance of the products contained herein. This documentation is not intended as a substitute for and is not to be used for determining suitability or reliability of these products for specific user applications. It is the duty of any such user or integrator to perform the appropriate and complete risk analysis, evaluation and testing of the products with respect to the relevant specific application or use thereof. Neither Schneider Electric Industries SAS nor any of its affiliates or subsidiaries shall be responsible or liable for misuse of the information contained herein.