



Main

Range of product	Modicon M171
Product or component type	Communication module
Communication port protocol	Profibus

Complementary

Integrated connection type	Profibus DP DB9 - shielded RS232 cable
Supply	Via base board EVD/EVC
Product compatibility	Logic controller M171 performance
Net weight	0.077 kg

Environment

Product certifications	cURus[RETURN]CE[RETURN]CSA[RETURN]EAC
Marking	CE
IP degree of protection	IP20
Ambient air temperature for operation	-10...55 °C
Ambient air temperature for storage	-20...85 °C
Relative humidity	10...90 % without condensation

Packing Units

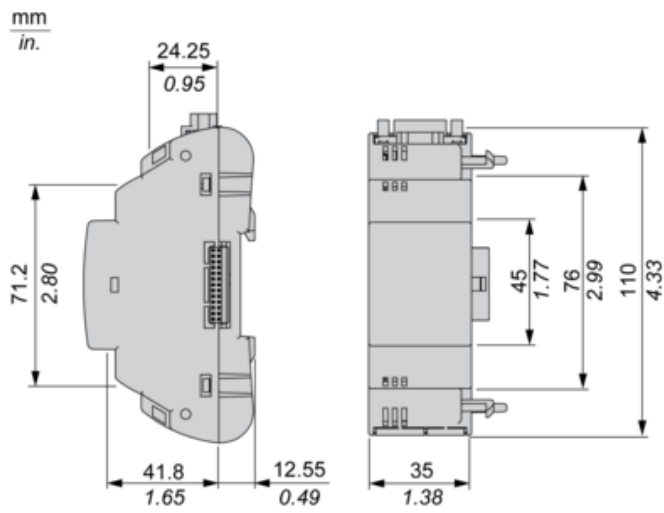
Unit Type of Package 1	PCE
Number of Units in Package 1	1
Package 1 Height	13.0 cm
Package 1 Width	9.1 cm
Package 1 Length	18.5 cm
Package 1 Weight	218.0 g
Unit Type of Package 2	S02
Number of Units in Package 2	6
Package 2 Height	15.0 cm
Package 2 Width	30.0 cm
Package 2 Length	40.0 cm
Package 2 Weight	1.716 kg

Offer Sustainability

REACH Regulation	 REACH Declaration
EU RoHS Directive	Pro-active compliance (Product out of EU RoHS legal scope)
Mercury free	Yes
China RoHS Regulation	 China RoHS Declaration
RoHS exemption information	 Yes

WEEE	The product must be disposed on European Union markets following specific waste collection and never end up in rubbish bins
Upgradeability	Upgradeable through digital modules and upgraded components

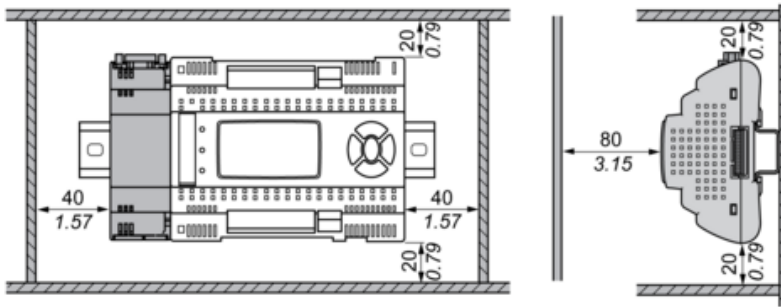
Dimensions



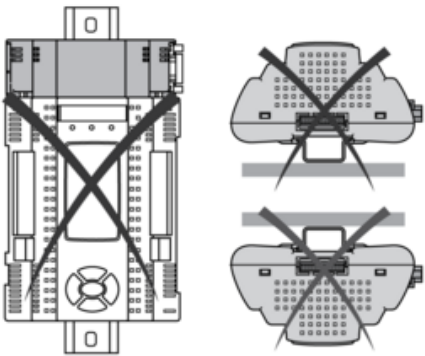
Mounting and Clearance

Clearance

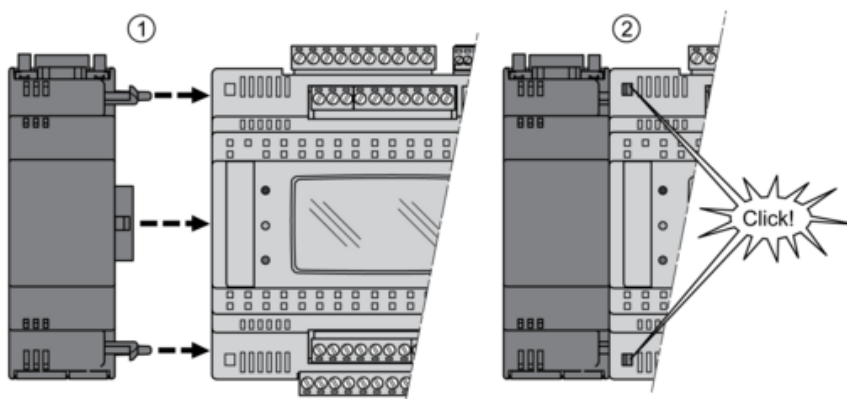
mm
in.



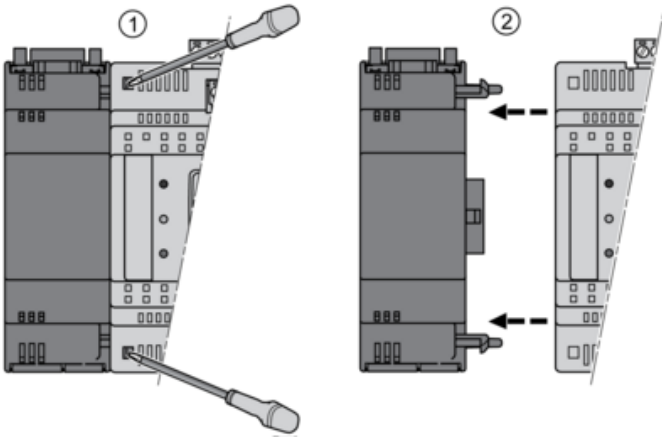
Misplacement



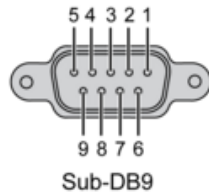
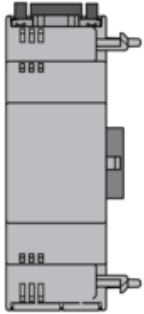
Mounting on Controller



Dismounting



Profibus port (Profibus DP)



N°	Profibus
1	Shield
2	Output ground 24 V
3	RXD-TXD +
4	Repeater Control Signal TRS
5	Ground 0 V
6	5 V
7	24 V
8	RXD-TXD-
9	Control Signal direction

*Shield: To be connected externally to the protective earth