

Main

| | |
|------------------------------------|-------------------|
| Range of product | Harmony eXLhoist |
| Accessory / separate part type | Holder |
| Accessory / separate part category | Support accessory |

Complementary

| | |
|-----------------------|---------------------|
| Material | Polypropylene |
| Width | 104 mm |
| Height | 239 mm |
| Depth | 115 mm |
| Product compatibility | Remote control ZART |
| Net weight | 0.25 kg |

Packing Units

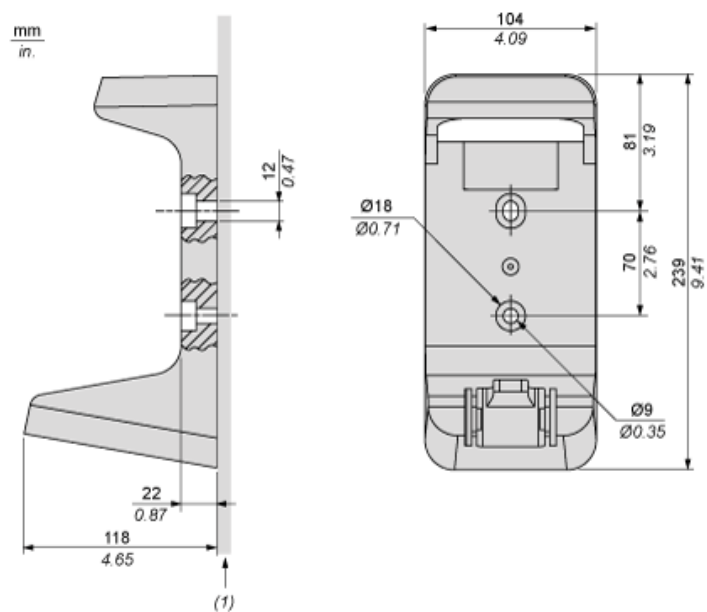
| | |
|------------------------------|----------|
| Unit Type of Package 1 | PCE |
| Number of Units in Package 1 | 1 |
| Package 1 Height | 12.6 cm |
| Package 1 Width | 25.8 cm |
| Package 1 Length | 11.2 cm |
| Package 1 Weight | 368.0 g |
| Unit Type of Package 2 | S03 |
| Number of Units in Package 2 | 6 |
| Package 2 Height | 30.0 cm |
| Package 2 Width | 30.0 cm |
| Package 2 Length | 40.0 cm |
| Package 2 Weight | 2.668 kg |

Offer Sustainability

| | |
|----------------------------|---|
| EU RoHS Directive | Pro-active compliance (Product out of EU RoHS legal scope) |
| Mercury free | Yes |
| China RoHS Regulation | China RoHS Declaration |
| RoHS exemption information | Yes |
| WEEE | The product must be disposed on European Union markets following specific waste collection and never end up in rubbish bins |

The information provided in this documentation contains general descriptions and/or technical characteristics of the performance of the products contained herein. This documentation is not intended as a substitute for and is not to be used for determining suitability or reliability of these products for specific user applications. It is the duty of any such user or integrator to perform the appropriate and complete risk analysis, evaluation and testing of the products with respect to the relevant specific application or use thereof. Neither Schneider Electric Industries SAS nor any of its affiliates or subsidiaries shall be responsible or liable for misuse of the information contained herein.

Dimensions



(1) Installation on flat surface