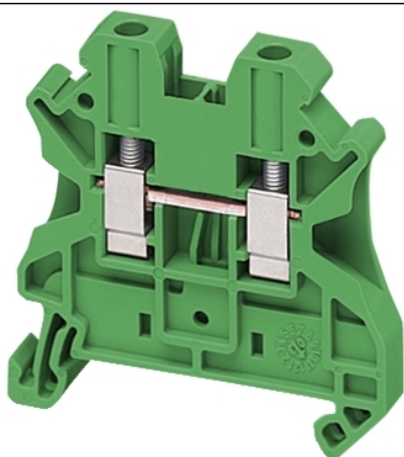


# NSYTRV42GN

## SCREW TERMINAL, FEED THROUGH, 2 POINTS, 4MM<sup>2</sup>, GREEN



### Main

Range	Lineryg
Product name	Lineryg TR
Product or component type	Terminal block
Device short name	TRV
Accessory / separate part category	Connection accessory
Terminal block type	Passthrough
Terminal block level	1
Mounting mode	Clip-on
Nominal cross section	4 mm <sup>2</sup>
Length	47.7 mm
Colour	Green
Quantity per set	Set of 50

### Complementary

Width	6.2 mm
Height	47.5 mm
Connections - terminals	1 x screw terminal: upstream (M3) 1 x screw terminal: downstream (M3)
Number of connections	2
Connection position	Sideways
Number of measurement input	2
Cable cross section	0.14...6 Mm <sup>2</sup> , solid cable with cable end 0.2...4 Mm <sup>2</sup> , flexible cable with cable end 0.2...6 Mm <sup>2</sup> , solid cable without cable end 0.2...6 mm <sup>2</sup> , flexible cable without cable end
Tightening torque	0.6...0.8 N.m
Wire stripping length	9 mm
Tool type	Connection: screwdriver Disconnection: screwdriver
[Ue] rated operational voltage	1000 V conforming to EN/IEC 60947-7-1 600 V CSA 690 V conforming to ATEX Exe II Ex II 2 GD 600 V cURus
[In] rated current	32 A conforming to EN/IEC 60947-7-1 30 A CSA 30 A conforming to ATEX Exe II Ex II 2 GD 30 A cURus
Material	Polyamide 6/6: insulating case Copper alloy: connector and screw Copper alloy: commoning link Chromium-nickel steel: spring
Dielectric loss	0.01 at 1 MHz conforming to IEC 60250 0.01 at 1 MHz conforming to VDE 0303-T4
Dielectric constant	3.7 at 1 MHz
Resistivity	10000 MΩ.M conforming to IEC 60093 10000 MΩ.m conforming to VDE 0303-T30
Surface resistance	1000 GΩ conforming to IEC 60093 1000 GΩ conforming to VDE 0303-T30
Creep resistance	500 CTI (> 400 kV) conforming to IEC 60093 500 CTI (> 400 kV) conforming to VDE 0303-T30

The information provided in this documentation contains general descriptions and/or technical characteristics of the performance of the products contained herein. This documentation is not intended as a substitute for and is not to be used for determining suitability or reliability of these products for specific user applications. It is the duty of any such user or integrator to perform the appropriate and complete risk analysis, evaluation and testing of the products with respect to the relevant specific application or use thereof. Neither Schneider Electric Industries SAS nor any of its affiliates or subsidiaries shall be responsible or liable for misuse of the information contained herein.

Flame retardance	V0, thickness 0.8 mm conforming to UL 94
Net weight	9.4 g
Range compatibility	Prisma G Prisma P Prisma PH Prisma Pack Spacial Kaedra Pragma TeSys
Product compatibility	Spacial enclosures

## Environment

Product certifications	DNV CSA CURus EAC IEC-Ex VDE ATEX LR GL
Dielectric strength	1000 V conforming to IEC 60243-1
Ambient air temperature for operation	-40...130 °C conforming to IEC 60216-1 -40...130 °C conforming to VDE 0304-T21

## Packing Units

Unit Type of Package 1	PCE
Number of Units in Package 1	1
Package 1 Weight	9 g
Package 1 Height	5.2 cm
Package 1 width	7.8 cm
Package 1 Length	24.8 cm
Unit Type of Package 2	BB1
Number of Units in Package 2	50
Package 2 Weight	474 g
Package 2 Height	5.2 cm
Package 2 width	7.8 cm
Package 2 Length	24.8 cm
Unit Type of Package 3	S03
Number of Units in Package 3	1150
Package 3 Weight	11.785 kg
Package 3 Height	30 cm
Package 3 width	30 cm
Package 3 Length	40 cm

## Offer Sustainability

Sustainable offer status	Green Premium product
REACH Regulation	 <a href="#">REACH Declaration</a>
EU RoHS Directive	Compliant  <a href="#">EU RoHS Declaration</a>
Mercury free	Yes
RoHS exemption information	 <a href="#">Yes</a>
China RoHS Regulation	 <a href="#">China RoHS Declaration</a>
Environmental Disclosure	 <a href="#">Product Environmental Profile</a>
WEEE	The product must be disposed on European Union markets following specific waste collection and never end up in rubbish bins
Halogen content performance	Halogen free plastic parts product

## Contractual warranty

---

Warranty	18 months
----------	-----------

---