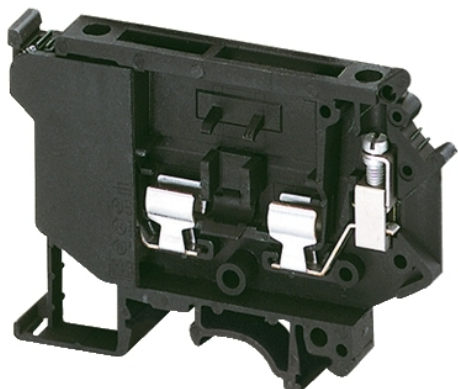


NSYTRV42SF5

SCREW TERMINAL, FUSED, FOR 5X20,5X25,5X30 MM CARTRIDGE FUSE, 2PTS, 4M



Main

| | |
|---------------------------|-------------------|
| Range | Lineryg |
| Product name | Lineryg TR |
| Product or component type | Terminal block |
| Device short name | TRV |
| Device application | Protection |
| Terminal block type | Fused disconnect |
| Terminal block level | 1 |
| Mounting mode | Clip-on |
| Nominal cross section | 4 mm ² |
| Length | 72.5 mm |
| Colour | Black |
| Quantity per set | Set of 50 |

Complementary

| | |
|--------------------------------|--|
| Fuse size | 5 x 20 mm |
| Width | 8.2 mm |
| Height | 56.5 mm |
| Connections - terminals | 1 x screw terminal: upstream 1 x screw terminal: downstream |
| Number of connections | 2 |
| Connection position | Sideways |
| Number of measurement input | 0 |
| Cable cross section | 0.2...4 Mm ² , flexible without cable end 0.2...4 mm ² , solid or flexible with cable end |
| Tightening torque | 0.5...0.8 N.m |
| Wire stripping length | 8 mm |
| Tool type | Connection: screwdriver Disconnection: screwdriver |
| [Ue] rated operational voltage | 500 V conforming to EN/IEC 60947-7-1 600 V cURus 600 V CSA |
| [In] rated current | 6.3 A conforming to EN/IEC 60947-7-1 12 A cURus 6.3 A CSA |
| Material | Polyamide 6/6: insulating case |
| Dielectric loss | 0.01 at 1 MHz conforming to IEC 60250 0.01 at 1 MHz conforming to VDE 0303-T4 |
| Dielectric constant | 3.7 at 1 MHz |
| Resistivity | 10000 Ω.Cm conforming to IEC 60093 10000 Ω.cm conforming to VDE 0303-T30 |
| Surface resistance | 1000 MOhm conforming to IEC 60093 1000 MOhm conforming to VDE 0303-T30 |
| Creep resistance | 500 CTI (> 400 kB) conforming to IEC 60093 500 CTI (> 400 kB) conforming to VDE 0303-T30 |
| Flame retardance | V0, thickness 0.8 mm conforming to UL 94 |
| Net weight | 18.3 g |

The information provided in this documentation contains general descriptions and/or technical characteristics of the performance of the products contained herein. This documentation is not intended as a substitute for and is not to be used for determining suitability or reliability of these products for specific user applications. It is the duty of any such user or integrator to perform the appropriate and complete risk analysis, evaluation and testing of the products with respect to the relevant specific application or use thereof. Neither Schneider Electric Industries SAS nor any of its affiliates or subsidiaries shall be responsible or liable for misuse of the information contained herein.

| | |
|-----------------------|--|
| Range compatibility | Prisma G Prisma P Prisma PH Prisma Pack Spacial Kaedra Pragma TeSys |
| Product compatibility | Spacial enclosures |

Environment

| | |
|---------------------------------------|---|
| Product certifications | CURus CSA EAC |
| Dielectric strength | 1000 V conforming to IEC 60243-1 |
| Ambient air temperature for operation | -40...130 °C conforming to IEC 60216-1 -40...130 °C conforming to VDE 0304-T21 |

Packing Units

| | |
|------------------|----------|
| Package 1 Weight | 0.017 kg |
| Package 1 Height | 0.050 dm |
| Package 1 width | 0.500 dm |
| Package 1 Length | 0.720 dm |

Offer Sustainability

| | |
|-----------------------------|---|
| Sustainable offer status | Green Premium product |
| REACH Regulation | REACH Declaration |
| EU RoHS Directive | Compliant EU RoHS Declaration |
| Mercury free | Yes |
| RoHS exemption information | Yes |
| China RoHS Regulation | China RoHS Declaration |
| Environmental Disclosure | Product Environmental Profile |
| WEEE | The product must be disposed on European Union markets following specific waste collection and never end up in rubbish bins |
| Halogen content performance | Halogen free plastic parts product |

Contractual warranty

| | |
|----------|-----------|
| Warranty | 18 months |
|----------|-----------|